

# **Dzaleka Refugee Project**

**Human Development Driven Impact**

# Collaboration.

**A joint venture between Holistic Impact Foundation (HIF) and Positive Learning Using Sports (PLUS), we are supporting refugee children living in the Dzaleka Refugee Camp in Malawi, Africa.**

## Comprehensive Support

**PLUS** and **HIF** provide their expertise in human development and strategic support to the Malawian NGO Refugees Development Support and Citizens (RDSC). Our aid is vital to RDSC's ability to educate and assist children in their program.

## What We Provide

We have already begun providing support and assistance to RDSC. With your support we will continue to:

- **Deliver** human development models designed by HIF and PLUS
- **Develop** custom versions of educational concepts meeting specific needs of RDSC
- **Assist** staff training
- **Strategic** support enabling RDSC to run more efficiently and effectively.

# The Project

HIF and PLUS are supporting a Malawian NGO - Refugees Development Support and Citizens (RDSC) - to educate and assist children living in the Dzaleka Refugee Camp. RDSC, run by Djuma Laurent, is working to respond to the significant challenges of children displaced from various surrounding countries. Our aid is vital to driving positive outcomes.

## Ed. Concept Design

---

HIF and PLUS are customizing our respective education and human development models for the specific needs of RDSC's students.

## Strategic Support

---

RDSC is a relatively new NGO with tremendous passion. We are helping them build a sustainable model to ensure their operations continue into the future.

## Training

---

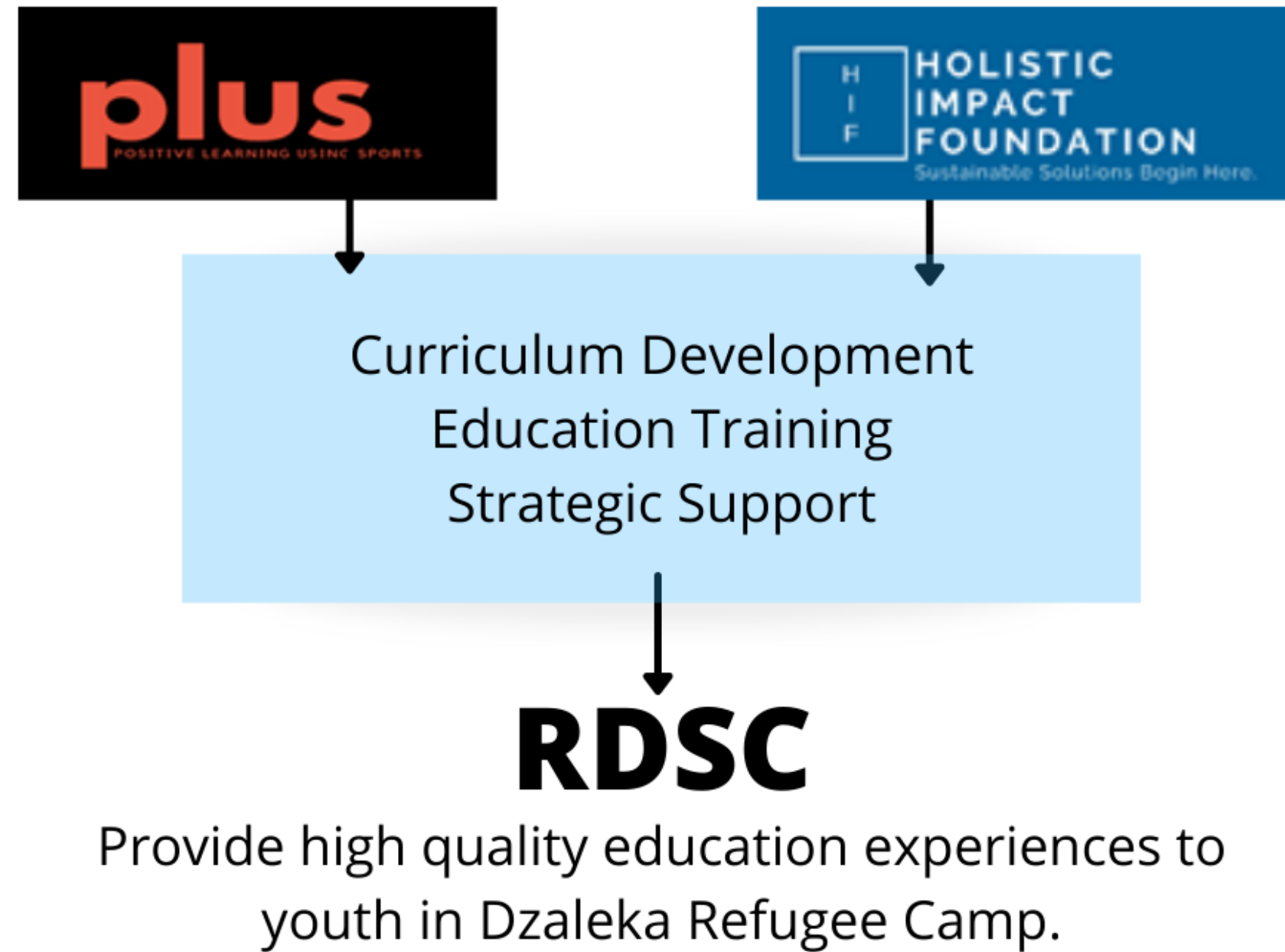
RDSC educators will receive trainings to maximize their talents and help develop their effectiveness with the youth.

## Equipment

---

HIF and PLUS will accumulate and provide critical equipment and educational supplies to RDSC.

# The Dynamic.



**Our Model Builds In  
Multiple Impact  
Opportunities**

Creating Impact At Scale

RESEARCH AND BUILD MODEL FOR  
EFFECTIVE REFUGEE EMPOWERMENT

Secondary Outcome

ENRICH  
COMMUNITY

EMPOWER STUDENTS AND  
DEVELOP FUNDAMENTAL SKILLS

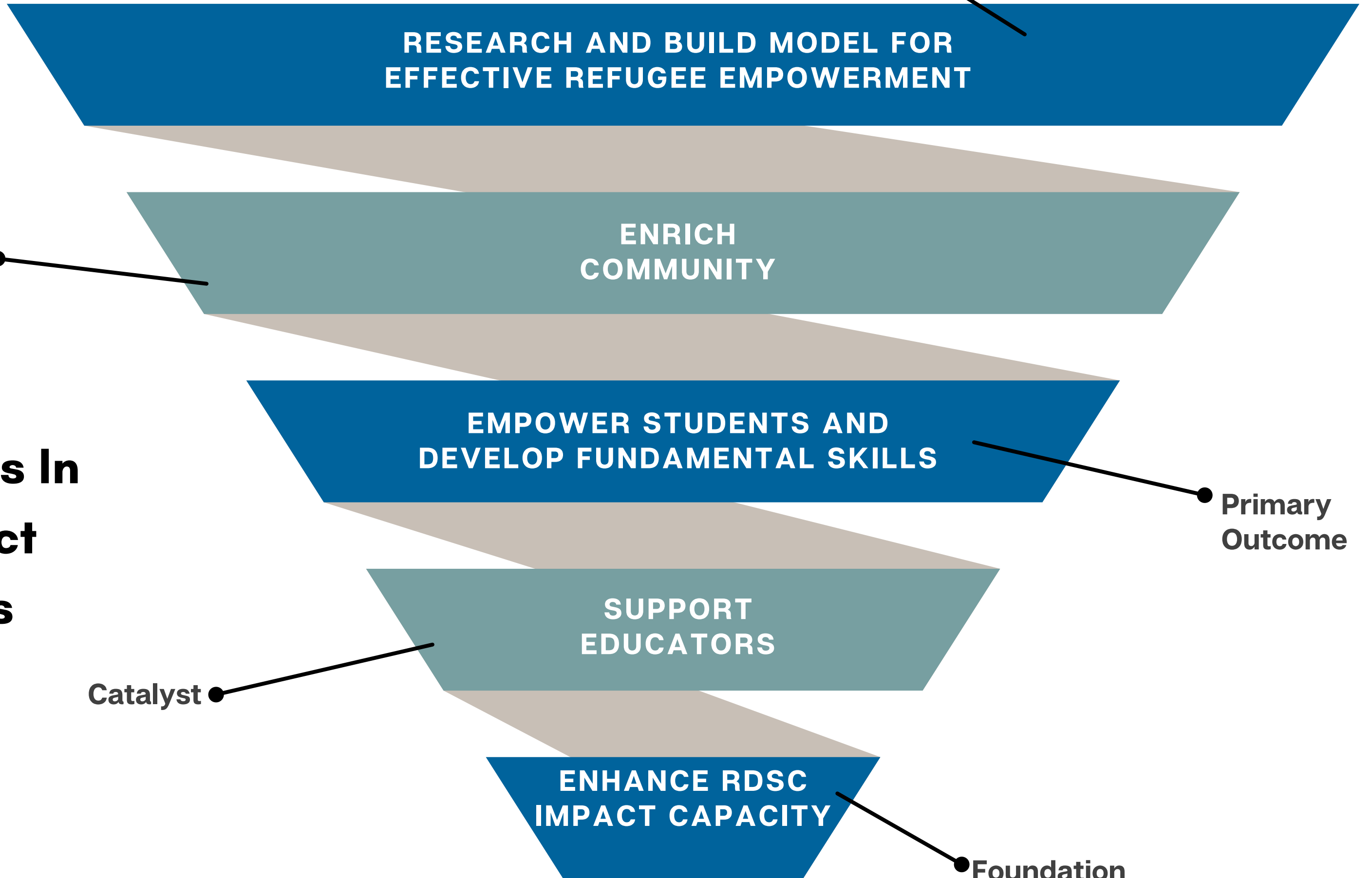
Primary  
Outcome

Catalyst

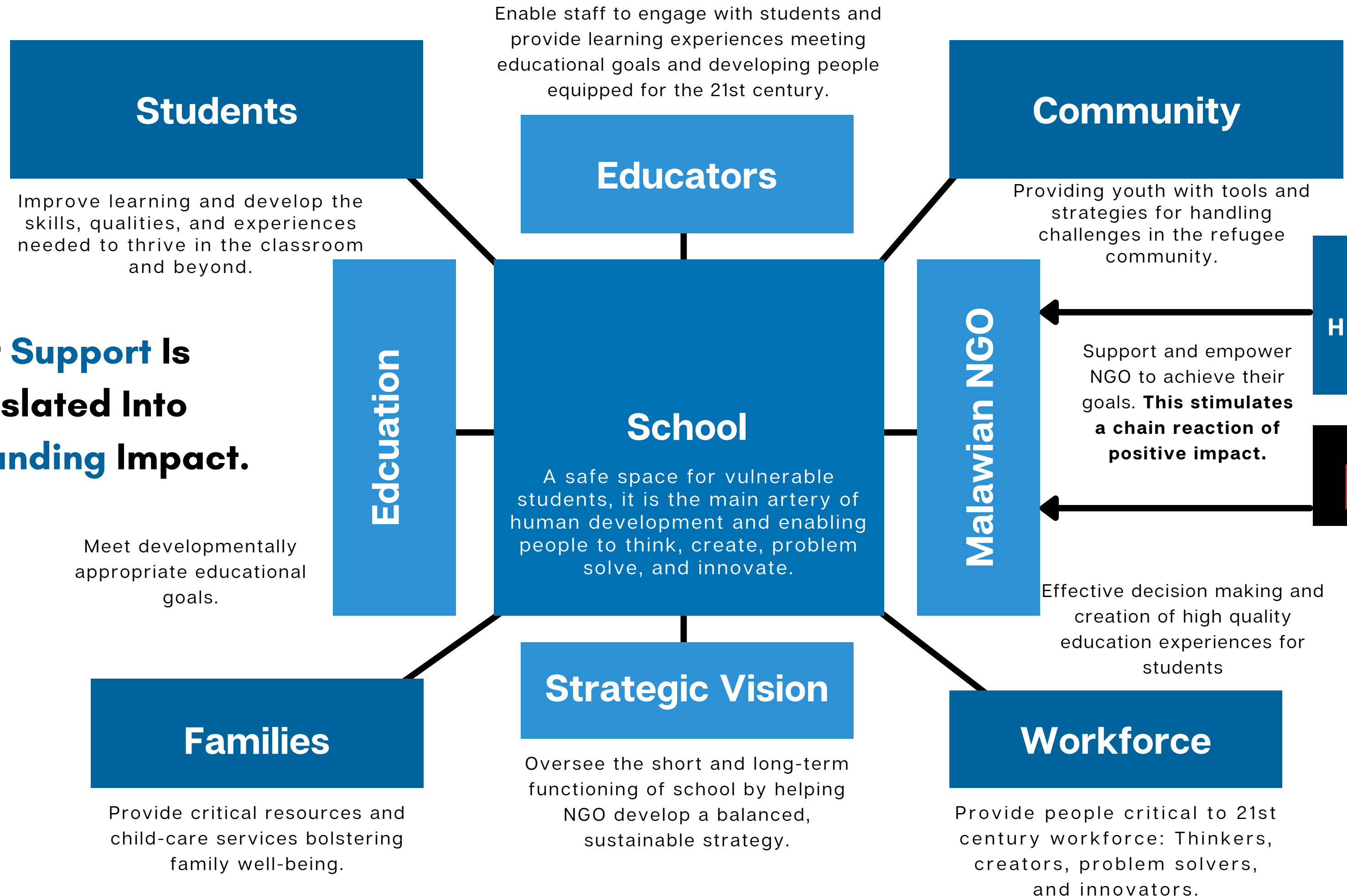
SUPPORT  
EDUCATORS

ENHANCE RDSC  
IMPACT CAPACITY

Foundation



**Your Support Is Translated Into Compounding Impact.**



# Increased

## Access to Resources

RDSC is in need of supplies and resources. They will enable the students to receive diverse learning opportunities, and offset the consequences of poverty.

## Holistic Education

Develop practical skills, qualities, and processes of thinking, problem solving, creating, and innovating. Receive age appropriate instruction in reading, writing, and math.

## Positive Relationships

Positive relationships with educators, adults, and other young people bolsters the health of a community. Using sports and art to hone skills, qualities, and abilities will create sustainable influence.



# Decreased



**Desperation**



**Hopelessness**



**Crime**



**Prostitution**



**Violence**

# Back Story.

As of January 31, 2021, Dzaleka Refugee Camp housed 48,547 refugee and asylum seekers. The camp, originally built for 10,000 is highly congested. Regional instability continues to push refugees towards Malawi, and the camp's capacities are strained. Within the camp, there are Malawian and foreign NGO's, and religious organizations providing services. However, there is significant need for additional education support and augmentation.



Holistic Impact Foundation

HIF is a nonprofit working to create scalable impact by empowering people and supporting communities. Using a comprehensive strategy composed of Education, Research, Consultancy, and Media, HIF meets immediate needs while stimulating long-term impact. Every platform is influenced by HIF's theory of sustainable solutions, human development model, and Engage, Think, Act (ETA) process.

[www.holisticimpactfoundation.org](http://www.holisticimpactfoundation.org)



Positive Learning Using Sports

Similar to Outward Bound, Montessori, and Round Square, PLUS is an educational model guided by a set of principles. PLUS has worked with over 5,000 leaders from around the globe and is the creator of sports-based education approach to teaching leadership and socio-emotional skills. PLUS uses sports intentionally to teach and develop targeted cognitive, social, psychological, moral, and physical outcome goals.

[www.positivelearningusingsports.com](http://www.positivelearningusingsports.com)

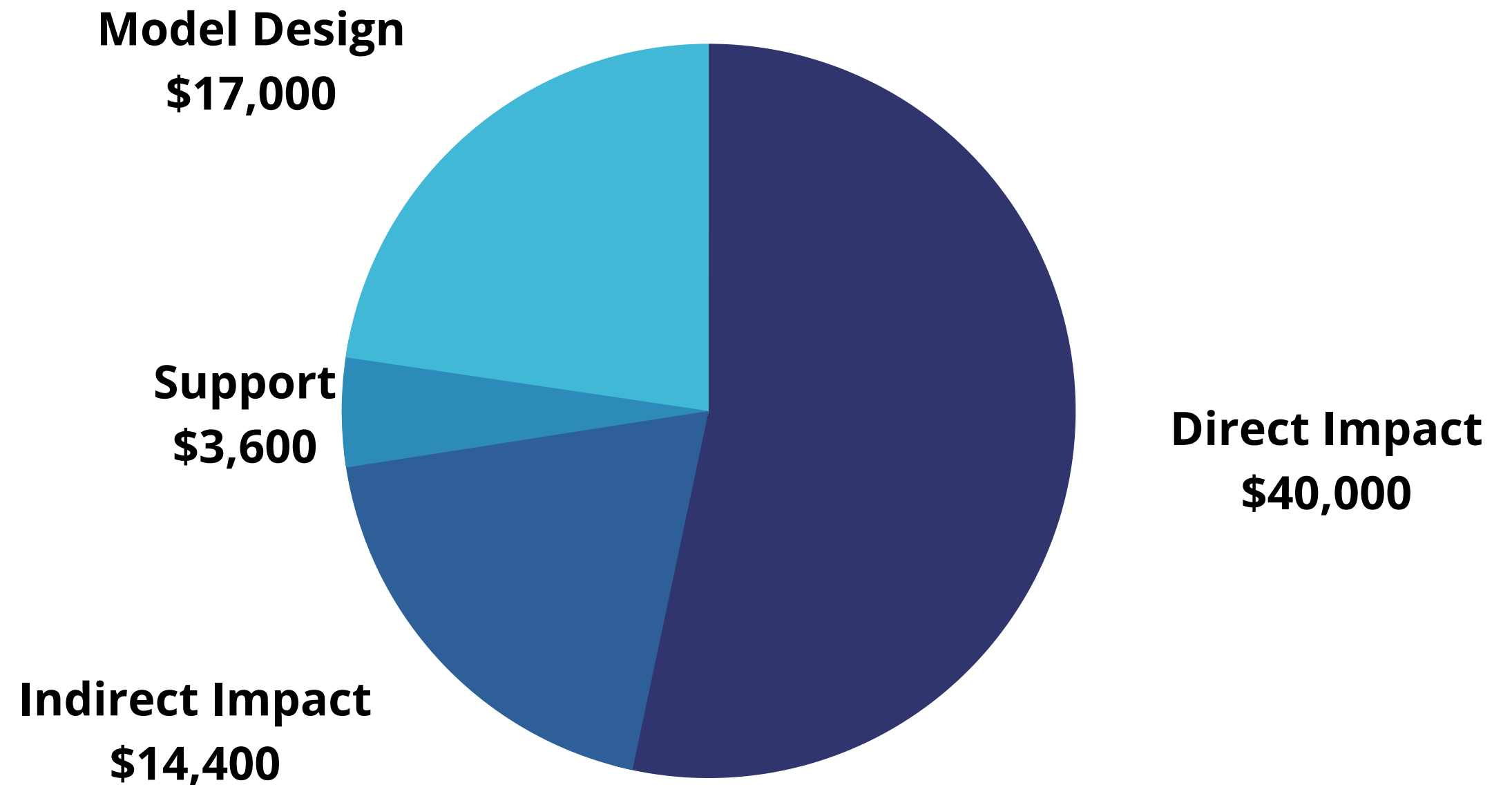
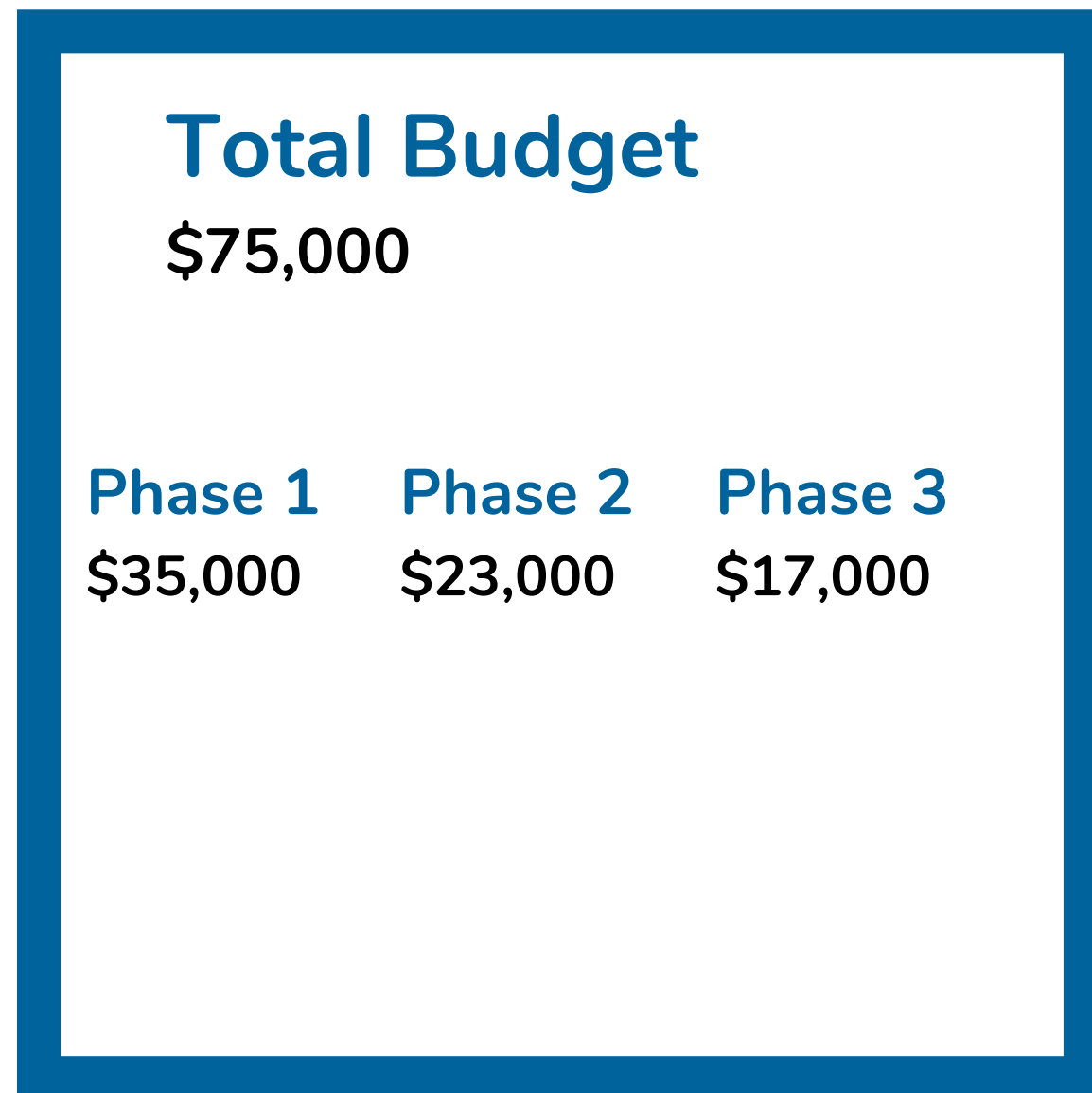


"We are much honored to work with Mr. Dylan and Dr. Beedy. Their support is essential to creating a program that will empower, educate, and develop the orphans and vulnerable and underprivileged children living at Dzaleka Refugee Camp. We are excited that Mr. Dylan and Dr. Beedy had chosen us to make a lasting difference, therefore, please support their effort to make a bright future for the kids."

**DJUMA LAURENT, DIRECTOR RDSC**

# Achieving Impact

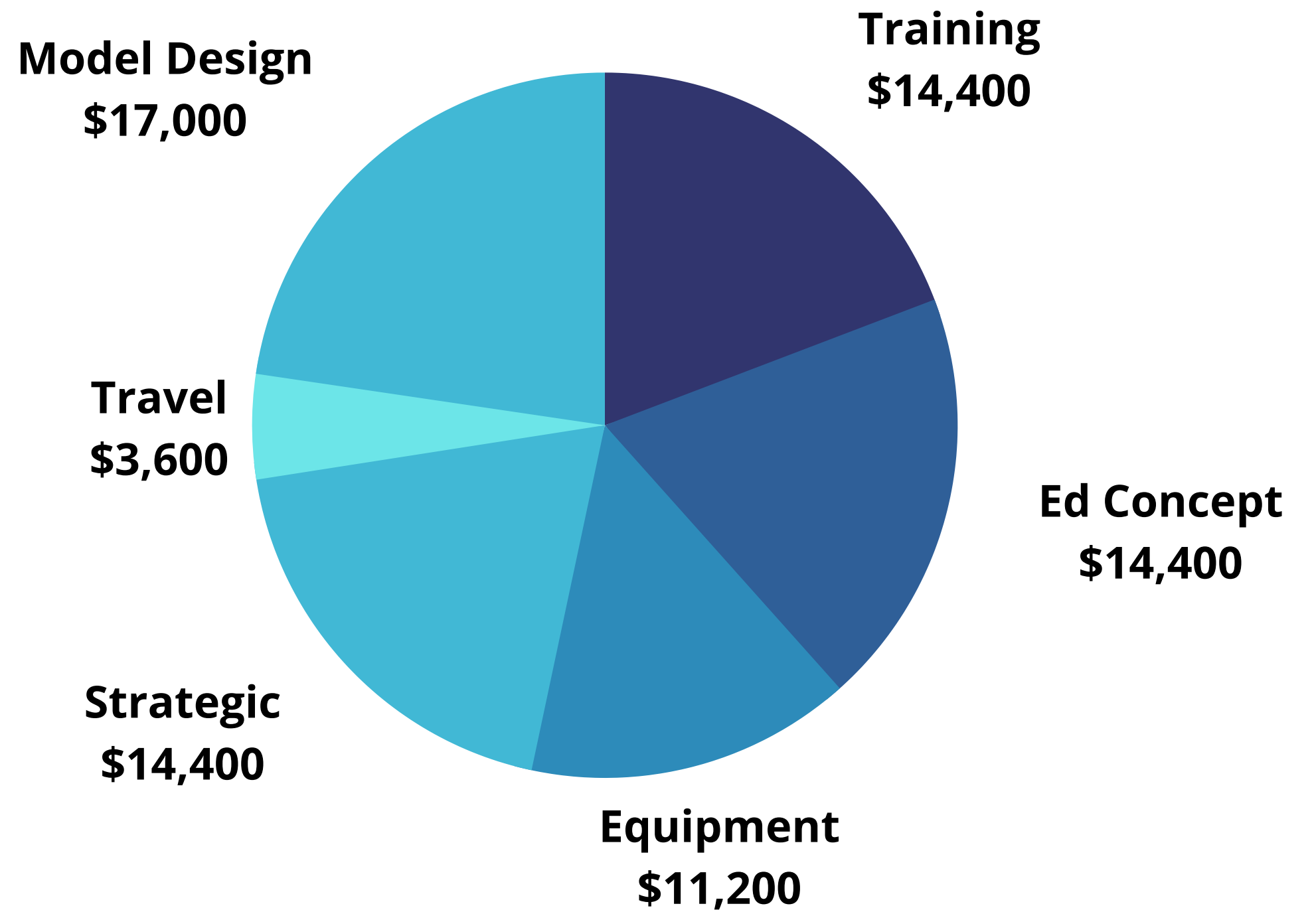
To realize our impact goals, PLUS and HIF require support from people passionate about making a difference. Donations will fuel the achievement of impact goals and objectives outlining this project.



# Breaking Down Budget

The needs of the project are transparent. Every element leads to direct or indirect improvement of RDSC's capacity as a mechanism of impact and empowerment of youth.

<b>Direct Impact</b> \$40,000
<b>Indirect Impact</b> \$31,400
<b>Support</b> \$3,600



# Your Support Matters.

**Funding this important project will enable us to continue the work we have already begun. Together, we can significantly impact the lives of children living in incredibly challenging circumstances.**